

Together, let's do the right things



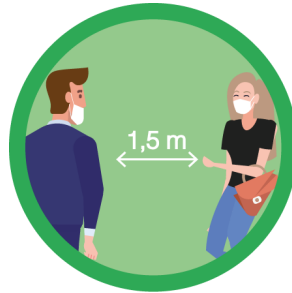
Hygiene measures and good practices to adopt in the building

EPFC

# 1 General measures



Bring your own mask and wear it constantly.

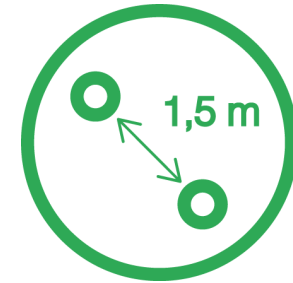


Keep your social distance when possible.



Before entering a room or before sitting down in the student area, disinfect your hands.

# 2 In class and in the Student area



Occupy all available space. Do not move the tables.



Disinfect your workstation before sitting down: table top, back of the chair, keyboard, screen, PC mouse. Allow the disinfectant to work for 30 seconds.

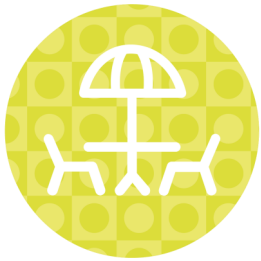


Bring your own study materials. Do not share materials (documents, food, computers).

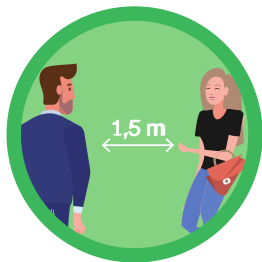
### 3 Breaks



Vending machines can be used as long as you disinfect your hands beforehand.

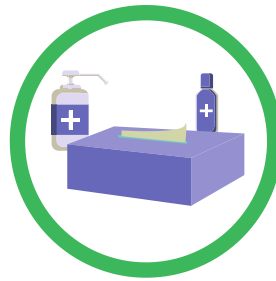


To take a break, following the signs indicating the direction of the terrace or the student area.



Any gathering that does not respect social distancing is unauthorised. If your classroom has not yet been opened, do not wait in the corridors but rather in a more open space.

### 4 In the building



Disinfectant gel can be found on each floor of the building.



Follow the directional arrows at the entrance and in the stairs, in order to maintain a one-way flow of people. Avoid touching the handrails.



Open and close doors with your elbow.

### Mask wearing



It is compulsory to wear a mask in all areas. Bring your own masks.



Before putting on your mask, wash your hands with soap and water or a disinfectant gel.



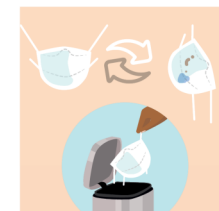
Place the mask over your mouth and nose and adjust it to fit your face best.



When wearing a mask, avoid touching it. If you do touch it, wash your hands with soap and water or a disinfectant gel.



Remove the mask by gripping the ear straps (do not touch the front of the mask).



If the mask becomes wet, put on a new one. Do not reuse a single-use mask; dispose of it in a 'general waste' bin.



Wash your hands with soap and water or a disinfectant gel.